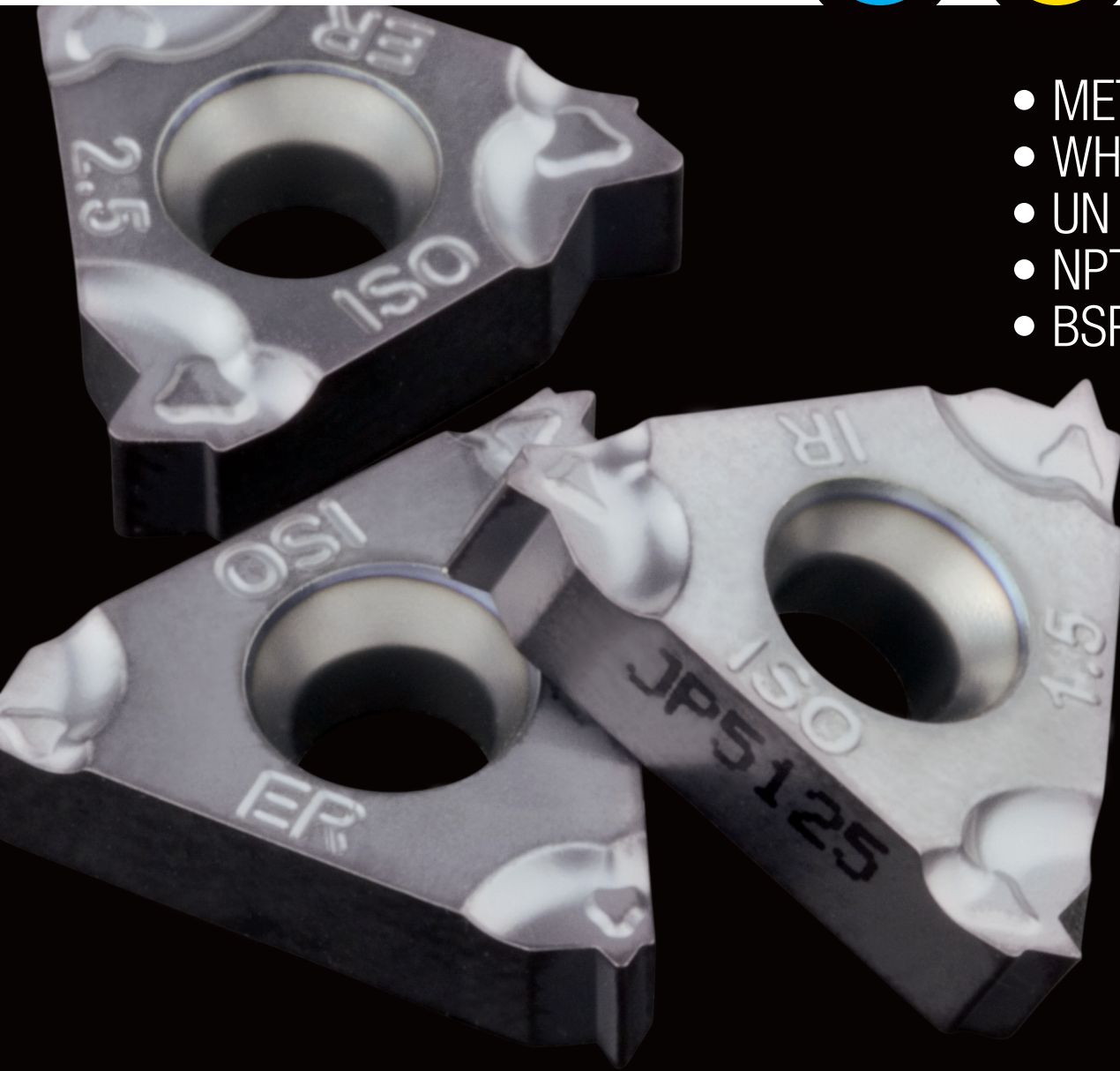


TPM THREADING SERIES

Universal geometry for perfect chip control.

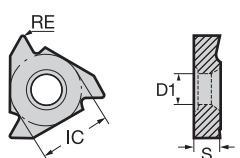
ISO








- METRIC
- WHITWORTH
- UN
- NPT
- BSPT

PLANKOS
ALATI, STROJEVI I OPREMA

nixkoTOOLS

<h1>TMP</h1> 	EXTERNAL Full and Partial profile				ISO513 JPS125	HC-PVD														
	Size	IC	S	D1		P	80													
	16	9.525	3.65	4.00	M	180														
					K	60														
					N	140														
					S	50														
					H	120														
GRADE APPLICATION AREA	Stable machining, continuous cut				+	○														
■ main application	General machining, light interruption				-	○														
■ applicable	Unstable machining, interrupted cut				+	○														

FULL PROFILE	M P M K S	 METRIC 60°	16ER	100ISO-TPM	RE 0.14	pitch: 1.00 mm no. of passes 5÷8	●														
					125ISO-TPM	RE 0.18	pitch: 1.25 mm no. of passes 6÷9	●													
					150ISO-TPM	RE 0.22	pitch: 1.50 mm no. of passes 6÷9	●													
					175ISO-TPM	RE 0.25	pitch: 1.75 mm no. of passes 8÷11	●													
					200ISO-TPM	RE 0.29	pitch: 2.00 mm no. of passes 8÷11	●													
					250ISO-TPM	RE 0.36	pitch: 2.50 mm no. of passes 10÷13	●													
					300ISO-TPM	RE 0.43	pitch: 3.00 mm no. of passes 12÷15	●													
		UN P M K S	 UNIFIED 60°	16ER	24UN-TPM	RE 0.15	pitch: 24 TPI no. of passes 5÷8	●													
						20UN-TPM	RE 0.18	pitch: 20 TPI no. of passes 6÷9	●												
						18UN-TPM	RE 0.20	pitch: 18 TPI no. of passes 6÷9	●												
						16UN-TPM	RE 0.23	pitch: 16 TPI no. of passes 7÷10	●												
						14UN-TPM	RE 0.26	pitch: 14 TPI no. of passes 8÷11	●												
						12UN-TPM	RE 0.31	pitch: 12 TPI no. of passes 8÷11	●												
						08UN-TPM	RE 0.46	pitch: 8 TPI no. of passes 12÷15	●												
		NPT P M K S	 NATIONAL PIPE TAPERED 60°	16ER	18NPT-TPM	RE 0.20	pitch: 18 TPI no. of passes 8÷11	●													
						14NPT-TPM	RE 0.22	pitch: 14 TPI no. of passes 10÷13	●												
						11.5NPT-TPM	RE 0.25	pitch: 11.5 TPI no. of passes 12÷15	●												
		W P M K S	 WHITWORTH 55°	16ER	19W-TPM	RE 0.17	pitch: 19 TPI no. of passes 6÷9	●													
						14W-TPM	RE 0.24	pitch: 14 TPI no. of passes 8÷11	●												
						11W-TPM	RE 0.30	pitch: 11 TPI no. of passes 9÷12	●												
	BSPT P M K S	 BRITISH STANDARD PIPE TAPERED 55°	16ER	28BSPT-TPM	RE 0.11	pitch: 28 TPI no. of passes 5÷8	●														
					19BSPT-TPM	RE 0.17	pitch: 19 TPI no. of passes 6÷9	●													
					14BSPT-TPM	RE 0.24	pitch: 14 TPI no. of passes 9÷12	●													
					11BSPT-TPM	RE 0.30	pitch: 11 TPI no. of passes 12÷15	●													

● stock standard, ○ non-standard stock, ▲ upcoming introduction, ▼ stock exhaustion

TURNING

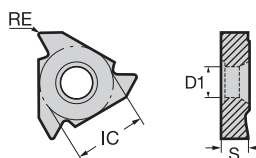
THREADING

MILLING

DRILLING

ADVANCED MATERIALS

ACCESSORIES

<h1>TMP</h1> 	<h2>INTERNAL</h2> Full and Partial profile				ISO513	HC-PVD														
						P	JPS125													
	11	6.35	3.18	3.20	M		80 180													
	16	9.525	3.65	4.00	K	60 140														
					N	50 120														
					S	20 40														
				H																
GRADE APPLICATION AREA		Stable machining, continuous cut			+															
main application		General machining, light interruption			-															
applicable		Unstable machining, interrupted cut			+															

M P M K S	11IR	100ISO-TPM	RE 0.07	pitch: 1.00 mm no. of passes 5÷8	●															
		125ISO-TPM	RE 0.09	pitch: 1.25 mm no. of passes 6÷9	●															
		150ISO-TPM	RE 0.11	pitch: 1.50 mm no. of passes 6÷9	●															
		175ISO-TPM	RE 0.13	pitch: 1.75 mm no. of passes 8÷11	●															
		200ISO-TPM	RE 0.15	pitch: 2.00 mm no. of passes 8÷11	●															
	16IR	100ISO-TPM	RE 0.07	pitch: 1.00 mm no. of passes 5÷8	●															
		125ISO-TPM	RE 0.09	pitch: 1.25 mm no. of passes 6÷9	●															
		150ISO-TPM	RE 0.11	pitch: 1.50 mm no. of passes 6÷9	●															
		175ISO-TPM	RE 0.13	pitch: 1.75 mm no. of passes 8÷11	●															
		200ISO-TPM	RE 0.15	pitch: 2.00 mm no. of passes 8÷11	●															
	METRIC 60°	250ISO-TPM	RE 0.18	pitch: 2.50 mm no. of passes 10÷13	●															
		300ISO-TPM	RE 0.22	pitch: 3.00 mm no. of passes 12÷15	●															
		UN P M K S	16IR	24UN-TPM	RE 0.08	pitch: 24 TPI no. of passes 5÷8	●													
			20UN-TPM	RE 0.09	pitch: 20 TPI no. of passes 6÷9	●														
			18UN-TPM	RE 0.10	pitch: 18 TPI no. of passes 6÷9	●														
16UN-TPM	RE 0.12		pitch: 16 TPI no. of passes 7÷10	●																
14UN-TPM	RE 0.13		pitch: 14 TPI no. of passes 8÷11	●																
UNIFIED 60°	12UN-TPM	RE 0.16	pitch: 12 TPI no. of passes 8÷11	●																
	08UN-TPM	RE 0.23	pitch: 8 TPI no. of passes 12÷15	●																
	NPT P M K S	16IR	18NPT-TPM	RE 0.20	pitch: 18 TPI no. of passes 8÷11	●														
14NPT-TPM		RE 0.22	pitch: 14 TPI no. of passes 10÷13	●																
11.5NPT-TPM		RE 0.25	pitch: 11.5 TPI no. of passes 12÷15	●																
NATIONAL PIPE TAPERED 60°	16IR	19W-TPM	RE 0.17	pitch: 19 TPI no. of passes 6÷9	●															
		14W-TPM	RE 0.24	pitch: 14 TPI no. of passes 8÷11	●															
		11W-TPM	RE 0.30	pitch: 11 TPI no. of passes 9÷12	●															
WHITWORTH 55°																				

● stock standard, ○ non-standard stock, ▲ upcoming introduction, ▽ stock exhaustion

TURNING

THREADING

MILLING

DRILLING

ADVANCED MATERIALS

ACCESSORIES

TURNING

THREADING

MILLING

DRILLING

ADVANCED MATERIALS

ACCESSORIES

TMP	INTERNAL Full and Partial profile				ISO513	HC-PVD											
	Size	IC	S	D1		P	JPS125										
	11	6.35	3.18	3.20	P	80 180											
	16	9.525	3.65	4.00	M	60 140											
					K	50 120											
					N												
					S	20 40											
					H												
GRADE APPLICATION AREA	Stable machining, continuous cut				+												
main application	General machining, light interruption				-												
applicable	Unstable machining, interrupted cut				+												
FULL PROFILE BSPT P M K S BRITISH STANDARD PIPE TAPERED 55°	16IR	28BSPT-TPM	RE 0.11	pitch: 28 TPI no. of passes 5÷8	●												
		19BSPT-TPM	RE 0.17	pitch: 19 TPI no. of passes 6÷9	●												
		14BSPT-TPM	RE 0.24	pitch: 14 TPI no. of passes 9÷12	●												
		11BSPT-TPM	RE 0.30	pitch: 11 TPI no. of passes 12÷15	●												
PARTIAL PROFILE 60° P M K S METRIC AND UNIFIED THREADS	11IR	A60-TPM	RE 0.08	pitch: 0.50÷1.50 mm, 48÷16 TPI	▲												
	16IR	A60-TPM	RE 0.08	pitch: 0.50÷1.50 mm, 48÷16 TPI	●												
		G60-TPM	RE 0.13	pitch: 1.75÷3.00 mm, 14÷8 TPI	●												
		AG60-TPM	RE 0.08	pitch: 0.50÷3.00 mm, 48÷8 TPI	●												
 55° P M K S WHITWORTH AND GAS THREADS	11IR	A55-TPM	RE 0.08	pitch: 48÷16 TPI	▲												
	16IR	A55-TPM	RE 0.08	pitch: 48÷16 TPI	●												
		G55-TPM	RE 0.21	pitch: 14÷8 TPI	●												
		AG55-TPM	RE 0.08	pitch: 48÷8 TPI	●												

● stock standard, ○ non-standard stock, ▲ upcoming introduction, ▽ stock exhaustion